

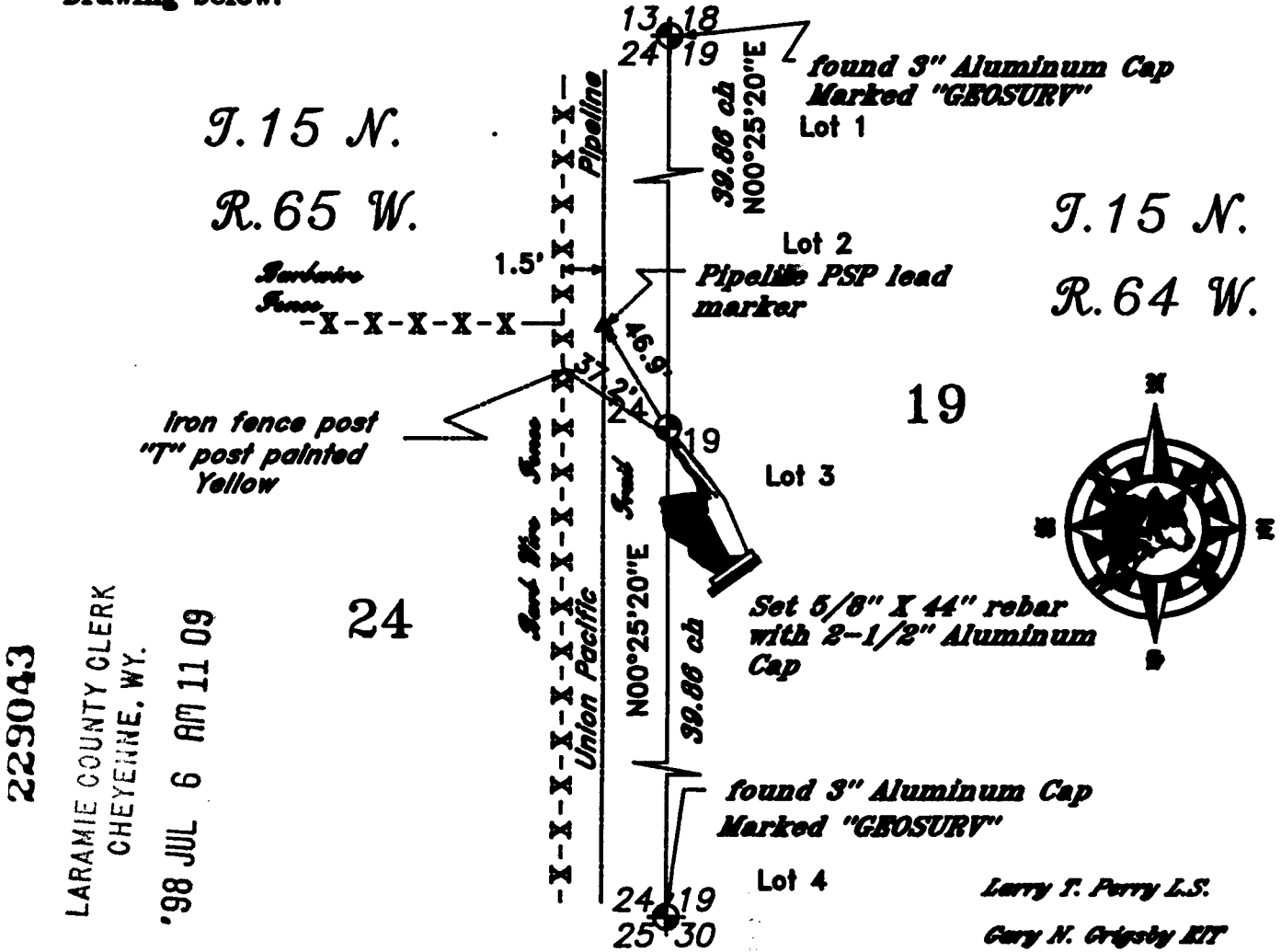
State of Wyoming Corner Record

(In compliance with the CORNER PERPETUATION AND FILING ACT, Wyoming Statutes, 1977, Section 36-11-101, et. seq., and the Rules and Regulations of the Board of Registration for Professional Engineers and Professional Land Surveyors)

The Reverse side of this form may be used if more space is needed.

The record of the original survey and the citation of the source of historical information (if the corner is lost or obliterated) The description of the corner monumentation evidence as found and/or monument and accessories established to perpetuate the location of this corner. A sketch of the relative location of the monument, accessories, and reference points with course and distance to the adjacent corner(s) (if determined in this survey). The method and rationale for reestablishment of the lost or obliterated corner.

GLO: North along the 8th Guide Meridian along the East boundary of Section 24 T.15N. R.66W. 21.73 chains The Old Cheyenne Emigrant trail, road bears NW to SE. 40.00 chains set granite boulder 12"X9"X6" for 1/4 Sec. Corner. Set a 5/8" X 44" rebar with a 2-1/2" Aluminum Cap as referenced in the Drawing below.

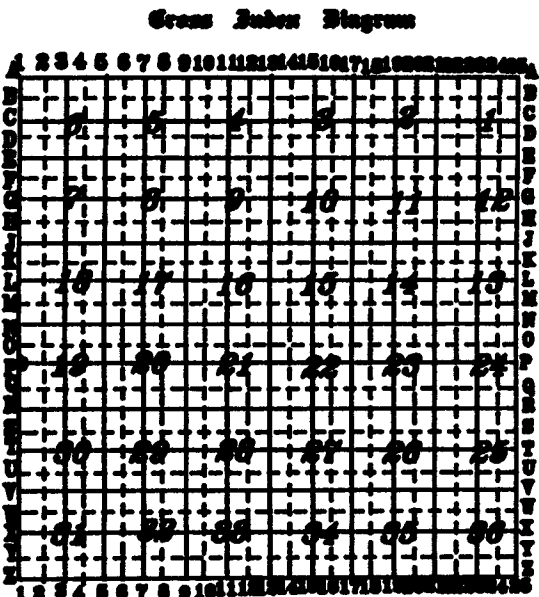


229043
 LARAMIE COUNTY CLERK
 CHEYENNE, WY.
 '98 JUL 6 AM 11 09

Larry T. Perry L.S.
 Gary N. Crisby EIT

Date of Field Work: 28 May A.D. 1998

Office Reference: DELAPLAN



Attest:

Terrestrial Surveying & Mapping Co.
 1187 Terry Ranch Road Cheyenne, Wyoming 82007
 Phone: (307) 634-6300
This corner record was prepared by me or under my direct supervision.

Seal and Signature

Corner Name: 1/4 Section: 19~24 T. 15 N. R. 64 W.: 6th P.M. Cross Index No. P~1 P~25